

KCP&L Missouri Service Areas Rate Increase Request



What's happening

KCP&L has filed a request with the Missouri Public Service Commission to increase base rates for our Missouri service areas. These requests, which are subject to regulatory approval, would take effect May 2011. These requests are one of the final steps toward successful completion of our Comprehensive Energy Plan.

We have a good plan

This is the fourth and final rate increase request associated with our Comprehensive Energy Plan. Benefits of the Plan include:

- **Providing** the electricity we need to support our local economy in the future
- **Maintaining** competitive electric rates
- **Continuing** to deliver reliable service
- **Balancing** the benefits of renewable energy with the stability of clean coal generation
- **Responding** to rapidly evolving environmental laws and regulations with flexible and sustainable solutions

Competitive rates

Competitive rates in Missouri are between 16% and 36% below the national average¹.

¹ Based on the EEI Typical Bill Study for the 12 months ended December 31, 2009.

For more information, visit www.kcplenergyplan.com.

Summary of request

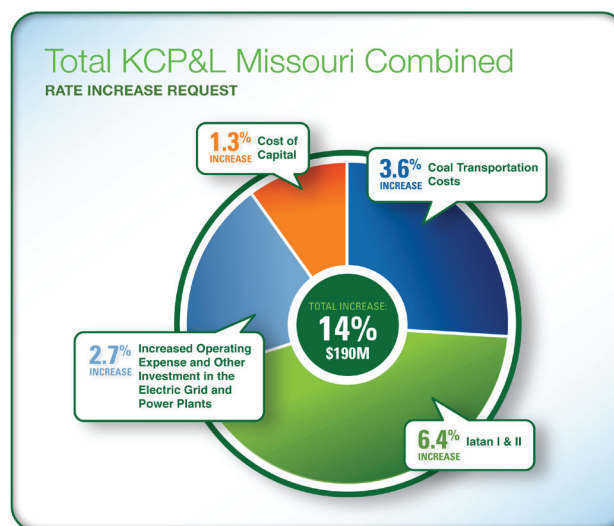
Rate Jurisdiction*	Rate Increase	Rate Increase Percentage	Monthly Increase For Typical Residential Customer**
GMO (MPS)	\$75.8 million	14.4%	\$14.86
GMO (L&P)	\$22.1 million	13.9%	\$12.82
KCP&L (MO)	\$92.1 million	13.8%	\$12.69

* Rate Jurisdiction Areas:

- GMO (MPS): Represents the area served by the former Aquila Missouri Public Service division.
- GMO (L&P): Represents the area served by the former Aquila St. Joseph Light & Power division.
- KCP&L (MO): KCP&L Missouri customers (not in former Aquila service territory).

** A typical residential customer uses a monthly average of 1130 kWh in the summer and 780 kWh in the winter.

Rate increase components



What you're paying for

- **Affordable Energy for the Long Term** – The primary reason for the rate increase request is Iatan 2, a state-of-the-art 850 megawatt (MW), highly efficient coal-fired power plant expected to be fully operational in late 2010. In addition, the requests include costs related to environmental upgrades at Iatan 1.
- **Reliable Service** – Ongoing upgrades to KCP&L's transmission and distribution facilities help continue the high level of reliability of KCP&L's electric system and decrease the number and duration of power outages. KCP&L recently received the PA Consulting Group ReliabilityOne™ award for the third consecutive year, recognizing the company as one of the Midwest's leading utilities in terms of delivering reliable service to its customers.
- **Increased Operating Costs** – The costs to produce and deliver electricity have increased dramatically in recent years, including costs for fuel and freight.
- **Renewable Energy** – Solar and wind projects are helping KCP&L meet state requirements for renewable energy.